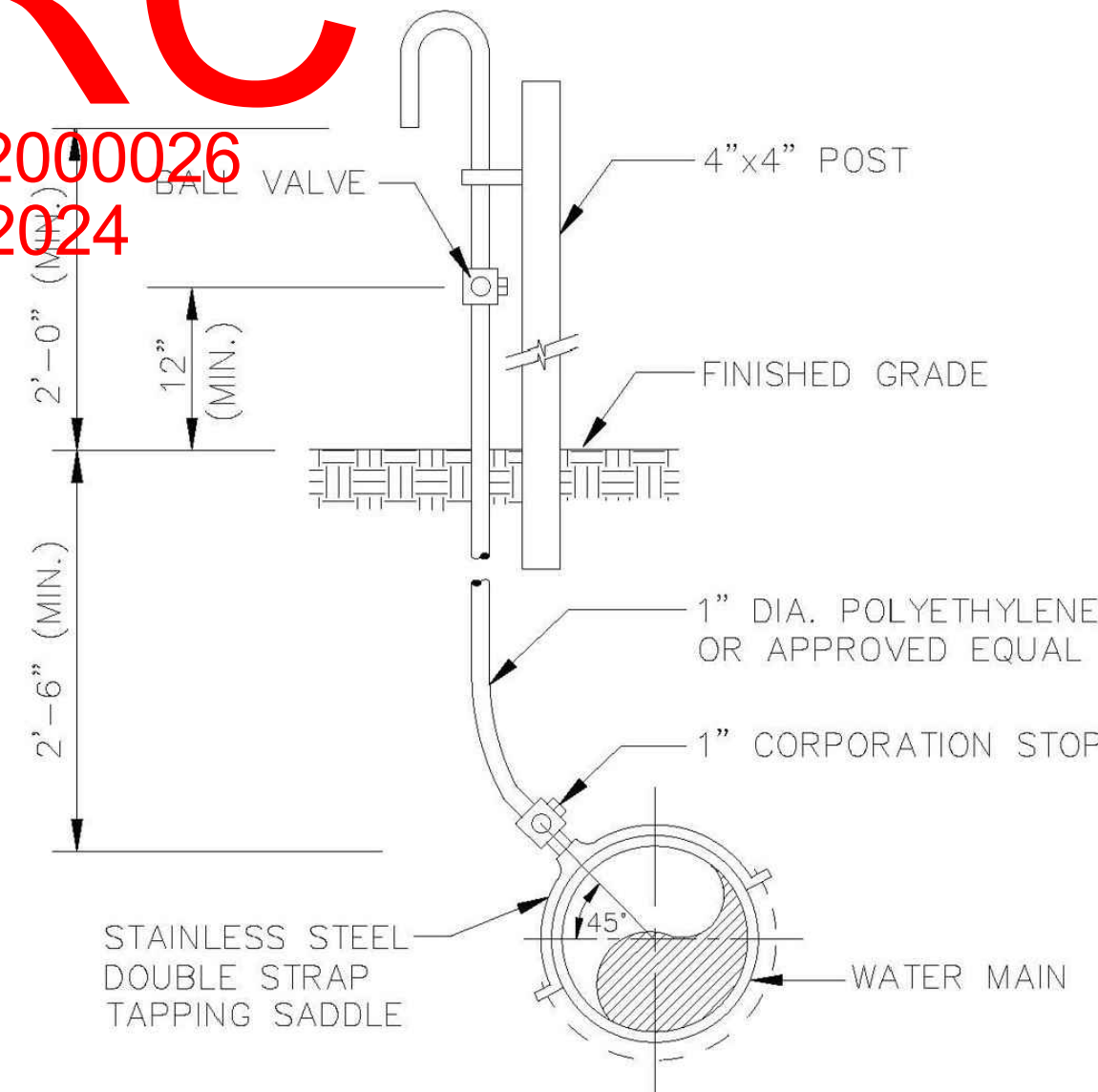


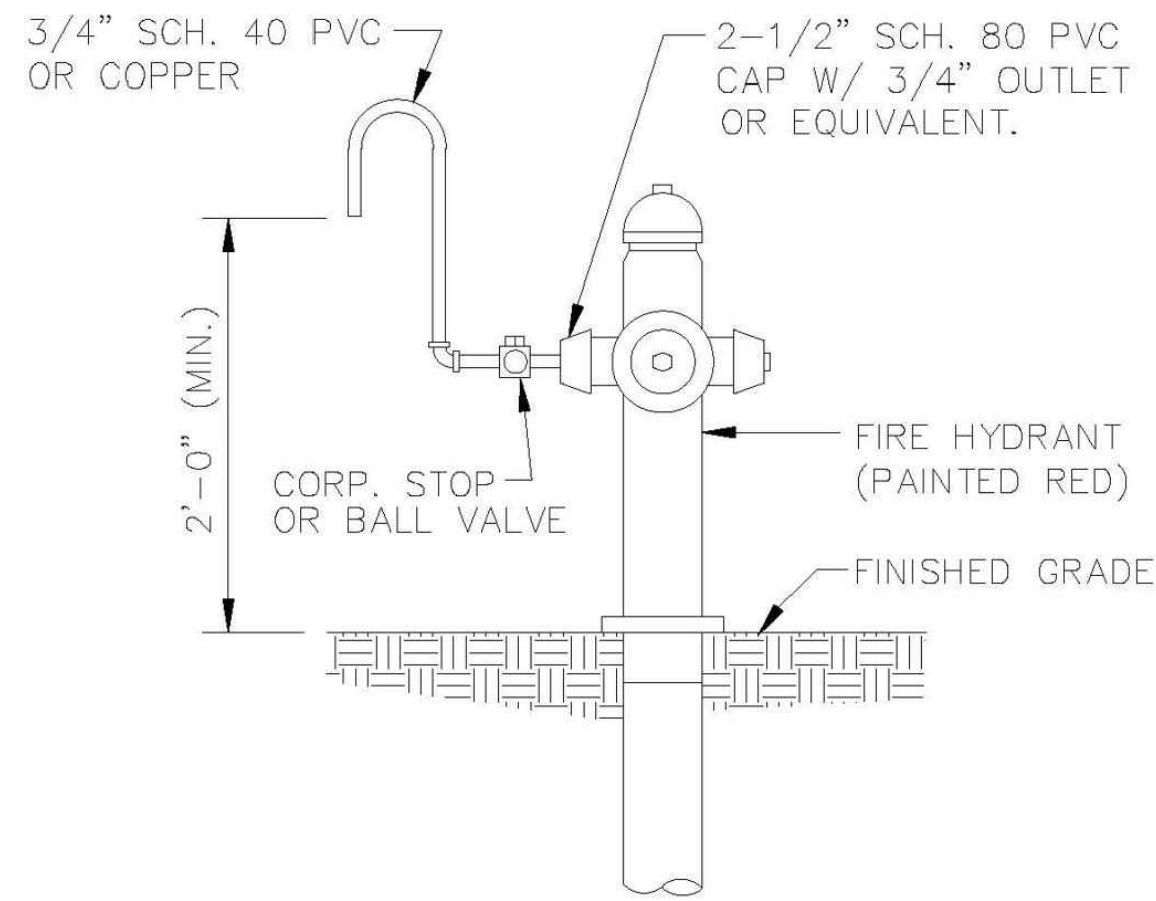
DRC

PZ22-12000026
11/20/2024



SAMPLE POINT (MAIN)

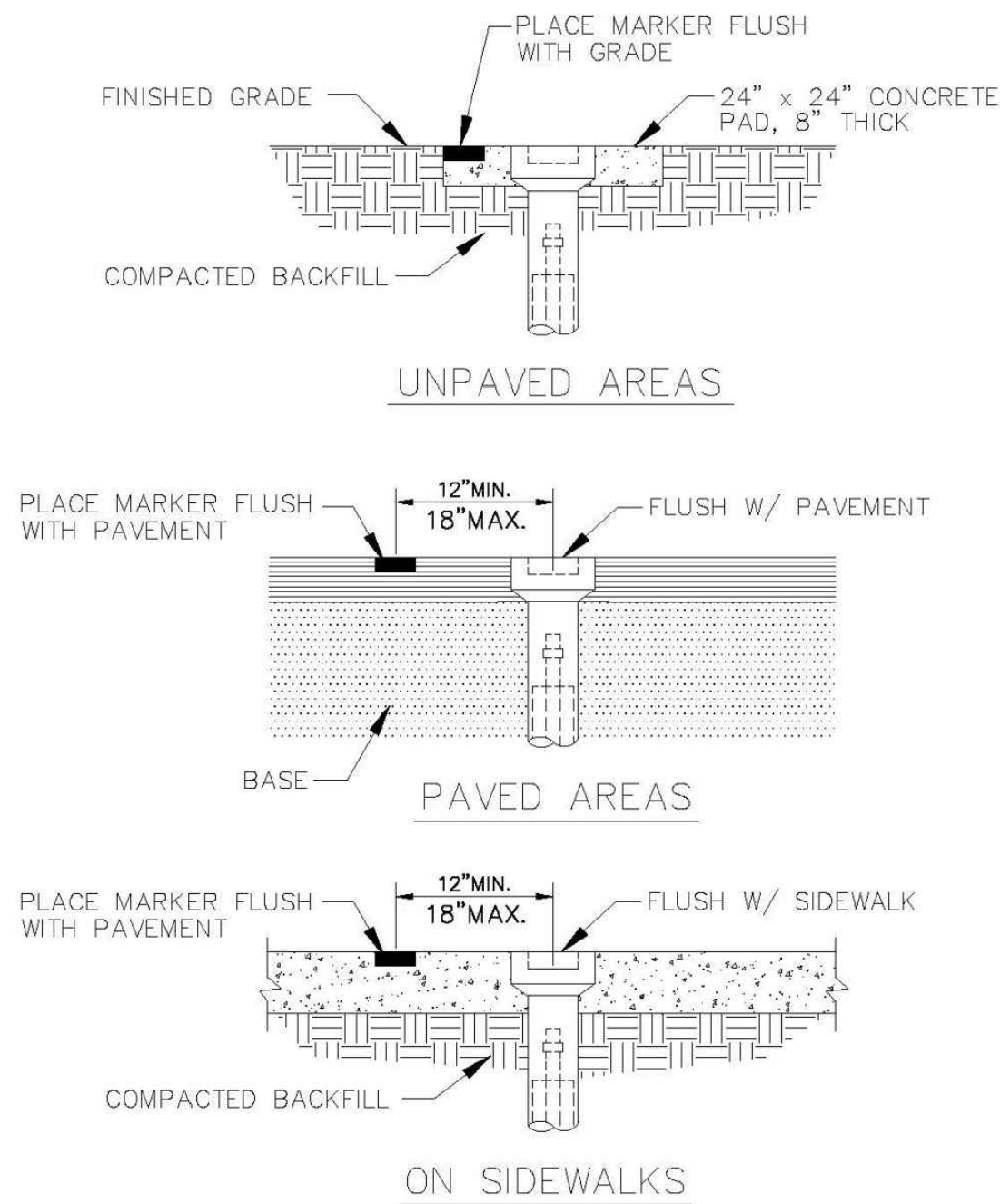
ALL D.I.P. TO BE PAINTED
BLUE ON TOP HALF OF PIPE.



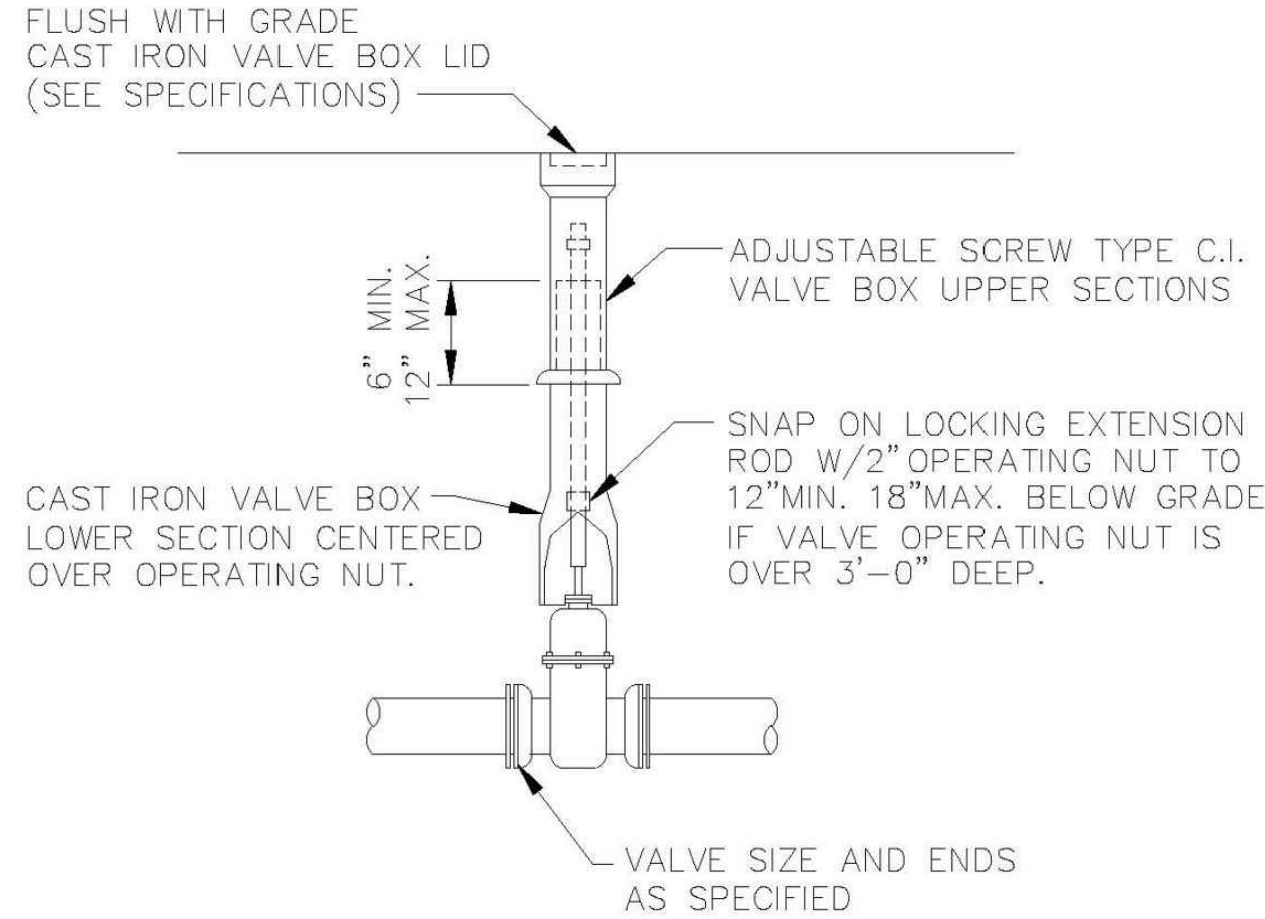
SAMPLE POINT (HYDRANT)

ALL POMPANO BEACH HYDRANTS SHALL BE PAINTED RED.

ALL D.I.P. TO BE PAINTED
BLUE ON TOP HALF OF PIPE.



VALVE BOX SETTINGS



GATE OR PLUG VALVE SETTING

USE MEGALUGS AT ALL PIPE JOINTS

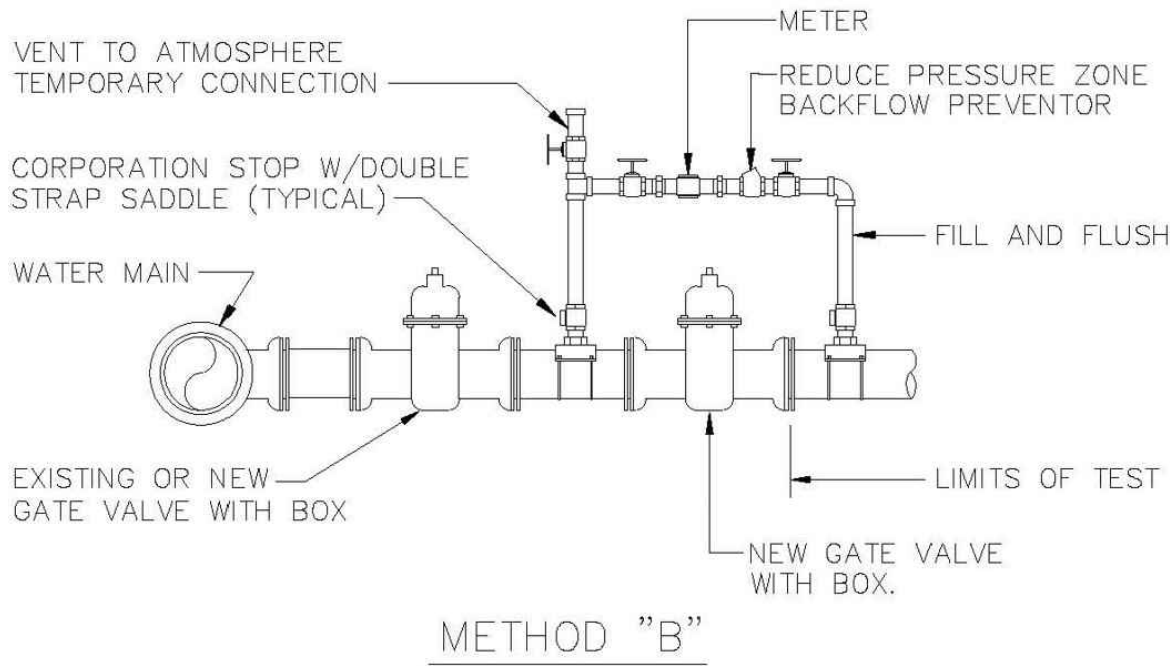
ALL D.I.P. TO BE PAINTED
BLUE ON TOP HALF OF PIPE.

ENGINEERING STANDARDS 2022		
REVISIONS		
BY	DATE	
S.S.	04-2009	
ENGINEERING DIVISION		
CITY OF POMPANO BEACH		
SCALE: N.T.S.		
SAMPLE POINT (MAIN)		DATE: MAY 2022 DWG. NO. 100-1

ENGINEERING STANDARDS 2022		
REVISIONS		
BY	DATE	
S.S.	04-2009	
ENGINEERING DIVISION		
CITY OF POMPANO BEACH		
SCALE: N.T.S.		
SAMPLE POINT (HYDRANT)		DATE: MAY 2022 DWG. NO. 101-1

ENGINEERING STANDARDS 2022		
REVISIONS		
BY	DATE	
S.S.	04-2009	
ENGINEERING DIVISION		
CITY OF POMPANO BEACH		
SCALE: N.T.S.		
VALVE BOX SETTINGS		DATE: MAY 2022 DWG. NO. 102-1

ENGINEERING STANDARDS 2022		
REVISIONS		
BY	DATE	
S.S.	04-2009	
T.W.	11-2007	
ENGINEERING DIVISION		
CITY OF POMPANO BEACH		
SCALE: N.T.S.		
GATE OR PLUG VALVE SETTINGS		DATE: MAY 2022 DWG. NO. 103-1

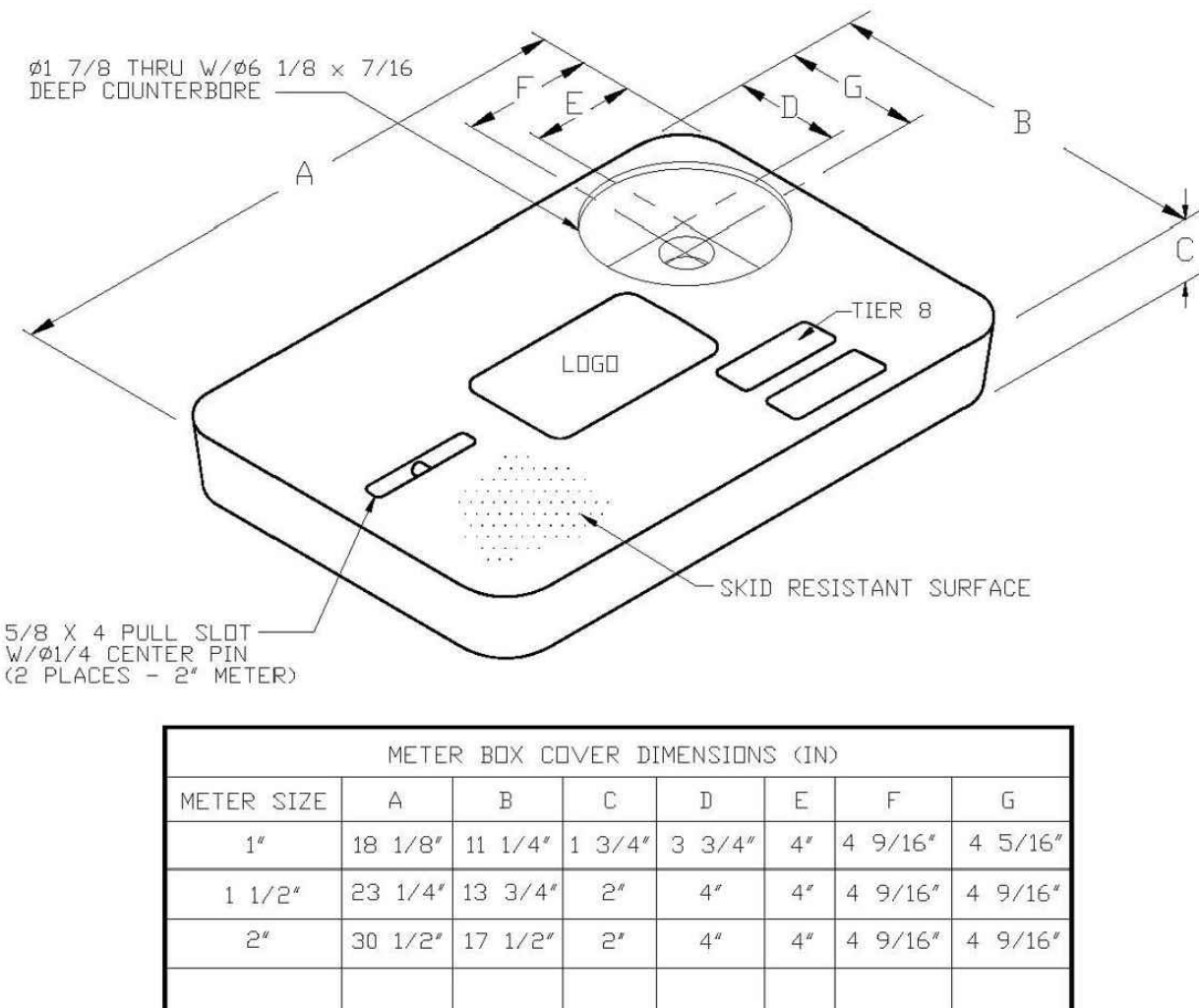


NOTES:

1. WATER MAIN TO BE PRESSURE TESTED AND DISINFECTED ACCORDING TO BROWARD COUNTY PUBLIC HEALTH UNIT REGULATIONS, AWWA, AND MUNICIPAL SPECIFICATIONS IN EFFECT.
2. BACTERIOLOGICAL TESTS ARE TO BE PERFORMED BY THE CONTRACTOR AND AN APPROVED TESTING LABORATORY.
3. REMOVE TEMPORARY CONNECTION AT SADDLE ON NEW MAINS AFTER FILLING AND FLUSHING HAS BEEN COMPLETED AND REPLACE WITH BRASS PLUG
4. PROVIDE ALL NECESSARY THRUST BLOCKS OR OTHER RESTRAINTS.
5. FILLING AND FLUSHING LOCATIONS SHALL BE COORDINATED BY THE CONTRACTOR, ENGINEER, AND CITY.
6. VENT TO ATMOSPHERE SHALL REMAIN OPEN DURING ALL PHASES OF PRESSURE TESTING.
7. AFTER COMPLETION FILL AND FLUSH CONNECTION
8. USE MEGALUGS AT ALL PIPE JOINTS

FILLING AND FLUSHING CONNECTION

ALL D.I.P. TO BE PAINTED
BLUE ON TOP HALF OF PIPE.



METER BOX COVER DIMENSIONS (IN)							
METER SIZE	A	B	C	D	E	F	G
1"	18 1/8"	11 1/4"	1 3/4"	3 3/4"	4"	4 9/16"	4 5/16"
1 1/2"	23 1/4"	13 3/4"	2"	4"	4"	4 9/16"	4 9/16"
2"	30 1/2"	17 1/2"	2"	4"	4"	4 9/16"	4 9/16"

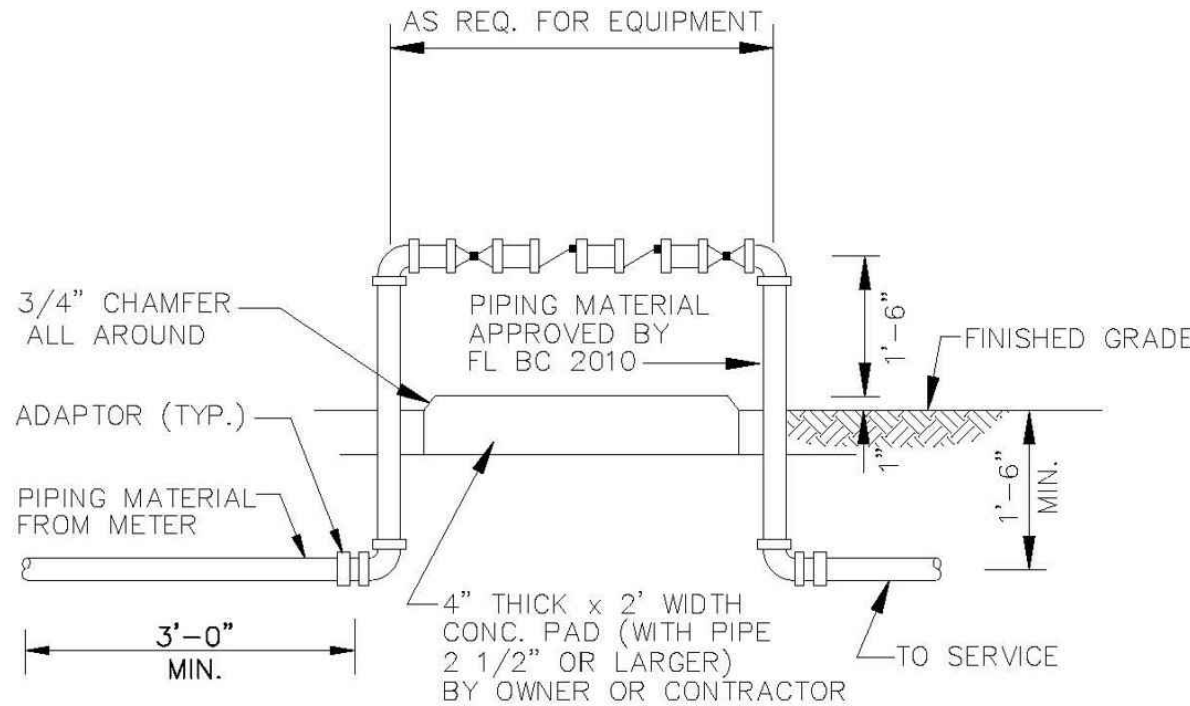
NOTES

1. CUSTOMER IS CITY OF POMPANO BEACH FLORIDA
LOGO TO BE SPECIFIED: CITY OF POMPANO BEACH POTABLE WATER
2. FITS NEPTUNE R450 ANTENNA
3. THIS COVER IS RATED FOR A STATIC DESIGN LOAD OF 8,000 LBS. (35,548 N) OVER A 10 (254) X 10 (254) AREA AND MUST PASS A MINIMUM STATIC TEST LOAD OF 12,000 LBS (53,378 N).
4. METER BOX COVER SHOULD BE RATED FOR TRAFFIC CONDITION AS DETERMINED BE ENGINEER OF RECORD.

POTABLE WATER METER BOX COVER

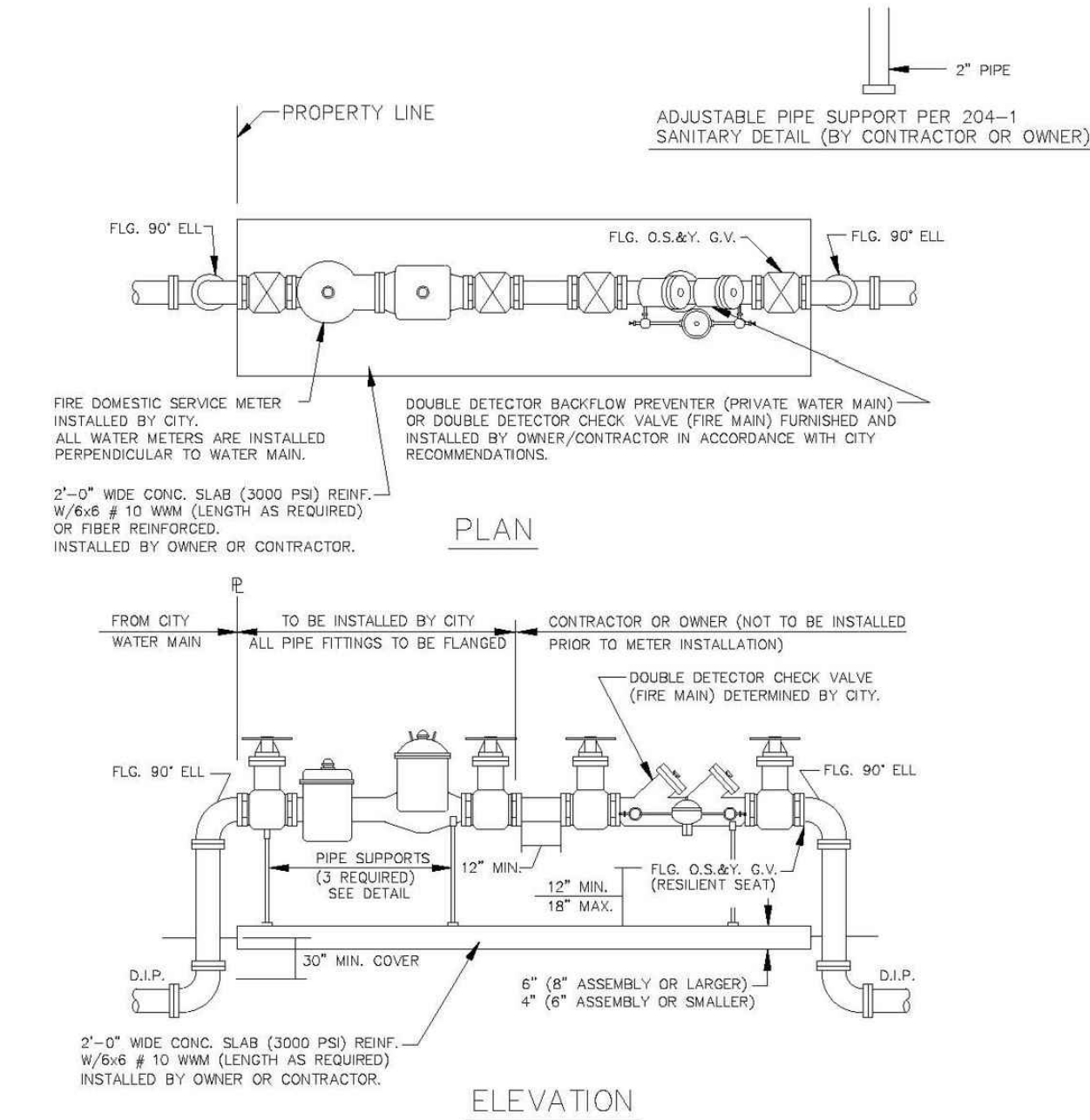
ENGINEERING STANDARDS 2022		
REVISIONS		
BY	DATE	
S.S.	11-2012	
ENGINEERING DIVISION		
CITY OF POMPANO BEACH		
SCALE: N.T.S.		
TYPICAL METER BOX COVER		DATE: JAN. 2022 DWG. NO. 105-3

ENGINEERING STANDARDS 2022		
REVISIONS		
BY	DATE	
T.W.	04-2008	
S.S.	03-2009	
S.S.	11-2012	
S.S.	01-2013	
ENGINEERING DIVISION		
CITY OF POMPANO BEACH		
SCALE: N.T.S.		
BACKFLOW PREVENTER		DATE: MAY 2022 DWG. NO. 106-1



BACKFLOW PREVENTER

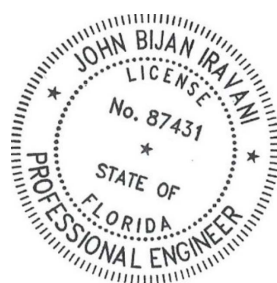
USE MEGALUGS AT ALL PIPE JOINTS 3" AND LARGER
PLEASE SEE METER INSTALL DIMENSION LIST ON STANDARD NO. 106-4
SMALL UNITS UNI-STRUT SUPPORT



NOTES

1. THE BACKFLOW PREVENTER FOR THE BY-PASS SHALL BE DDV OR RPZ.
2. PLEASE NOTE THAT WATER METERS 3" AND LARGER ARE SUBJECT TO AN APPROXIMATE ORDER LEAD TIME OF 60 TO 75 DAYS AFTER FULL PAYMENT. PLEASE CONTACT CUSTOMER SERVICE AT 954-786-4637 TO ARRANGE FOR METER PROCUREMENT AND INSTALLATION.
3. USE MEGALUGS AT ALL PIPE JOINTS.
4. PLEASE SEE METER INSTALL DIMENSION LIST ON STANDARD NO. 106-4

ENGINEERING STANDARDS 2022		
REVISIONS		
BY	DATE	
S.S.	09-2011	
S.S.	11-2012	
S.S.	12-2013	
S.S.	11-2016	
ENGINEERING DIVISION		
CITY OF POMPANO BEACH		
SCALE: N.T.S.		
FIRE ONLY METER AND BACKFLOW DEVICE		DATE: MAY 2022 DWG. NO. 106-3



Digitally signed by
John Iravani
Date: 2024.10.15
10:37:41 -04'00'

REVISIONS

Jeff H. Iravani, Inc.
Consulting Engineers
1934 COMMERCE LANE, SUITE 5
JUPITER, FLORIDA 33458
TEL: (561) 575-6030
FAX: (561) 575-6088
EMAIL: jh@hellsouth.net
WEBSITE: www.jhinc.com

201 SW 12th Ave
Pompano Beach, Florida

Water & Wastewater Details		JOB NO.	2208-1411
DESIGNED BY	JBI	DRAWN BY	JBI
SCALE	N.T.S.		
DATE	01/28/2023		

SEAL	
FR # 6986	SHEET NO. C-10